



els

EFFICIENT LIGHTING SYSTEMS



belle, belle ovale,
sumo & fluorolite
weatherproof,
vandal resistant
wall & ceiling
lights



Page 3 introduction

Page 4 belle

Page 5 belle ovale

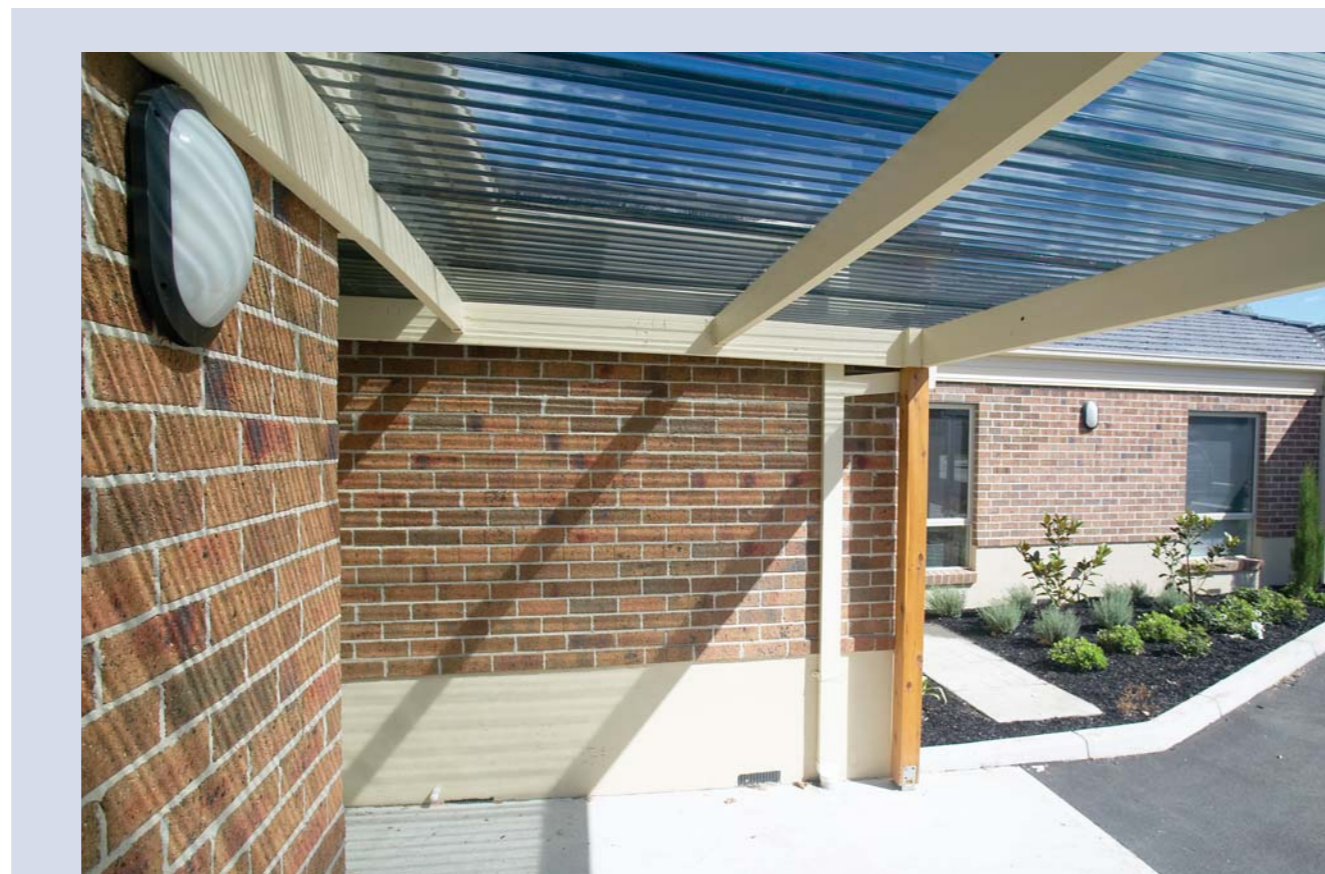
Page 6 sumo


Page 7 fluorolite



This range of fittings by ELS offers designers a choice of quality wall and ceiling lights that are both weatherproof and vandal resistant. Typical uses for these products are schools, housing projects, nursing homes, apartment development and hotels/motels.

efficient lighting systems weatherproof, vandal resistant wall & ceiling lights



 Efficient Lighting Systems also has a range of lighting suitable for use in bathrooms in accordance with ASNZS3000:2000 Section 7 for use in zones 2 and 3 as defined by the standard. These fittings are shown by this symbol.



Belle

Weatherproof IP65 Vandal resistant

Features include

- Base and trim are manufactured from U.V. stabilised flame retardant polycarbonate
- Lens is manufactured from U.V. stabilised opal polycarbonate. The lens minimises unwanted lamp image
- An alternative semi opal lens is available for maximum light output. The image of the lamp is visible through this lens
- The trim screws are secured in brass inserts fixed to the base
- As an option both stainless steel trim screws or stainless steel tamper resistant screws are available
- Screw covers supplied for models with Black trim and White trim
- Degree of protection: IP 65.

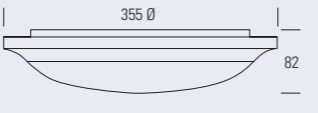
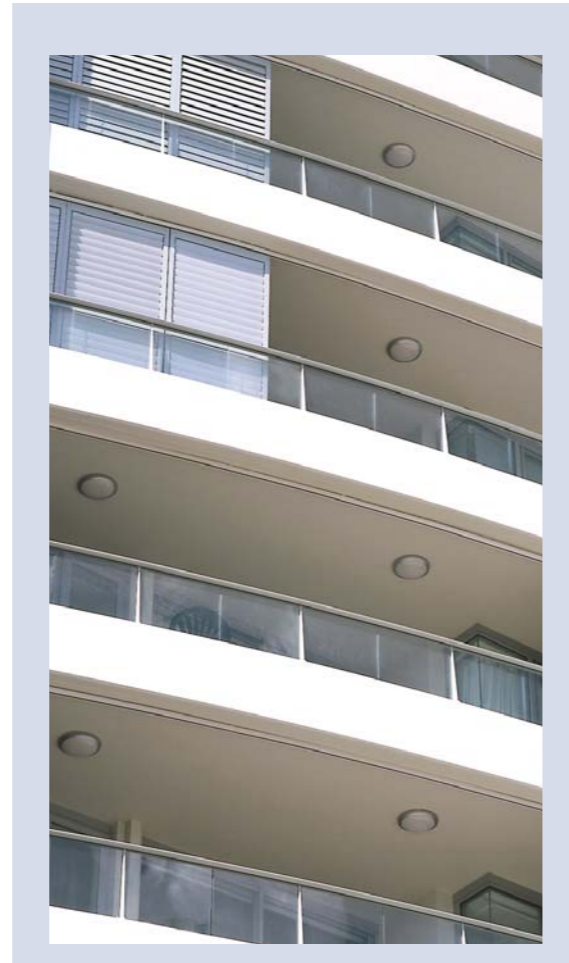
Specifications

- For stainless steel trim screws add suffix **S/S** (eg. BLW211 S/S)
- For tamper resistant screws add suffix **T** (eg. BLW211 T)
- For semi opal transparent lens add suffix **S/O** (eg. BLW211 S/O)

■ How to specify base colour
 White W Silver S
 Black B
 (eg. BL/■/29 becomes BLW29 ie. white trim)



Belle	Lamp type	Catalogue No.
2 x 9w G23		BL/■/29
2 x 11w G23		BL/■/211
1 x 18w G24d2		BL/■/18
1 x 26w G24d3		BL/■/26
1 x 21w 2D GR10q		BL/■/21

DATA AVAILABLE ON CD



MADE IN AUSTRALIA



Belle Ovale

Features

- Base and trim are manufactured from U.V. stabilised flame retardant polycarbonate.
- Lens is manufactured from U.V. stabilised opal polycarbonate. The lens minimises unwanted lamp image.
- Stainless steel Phillips head trim screws are standard.
- Optional tamper resistant Allan head stainless screws are available.
- Degree of protection: IP 65. Suitable for use in bathrooms zone 2 and 3.

Australian Certificate of Registration of Design No. 132708 and 132709

New Zealand-Certificate of Registration of Design No. 28232 and 28233

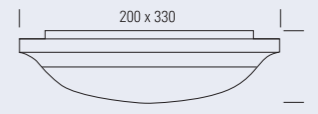
Specifications

- For tamper resistant screws add suffix **T** (eg. OVS26 T)

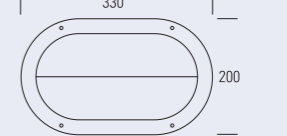
■ How to specify base colour
 White W Silver S
 Black B
 (eg. OV/■/9 becomes OVW9 ie. white trim)



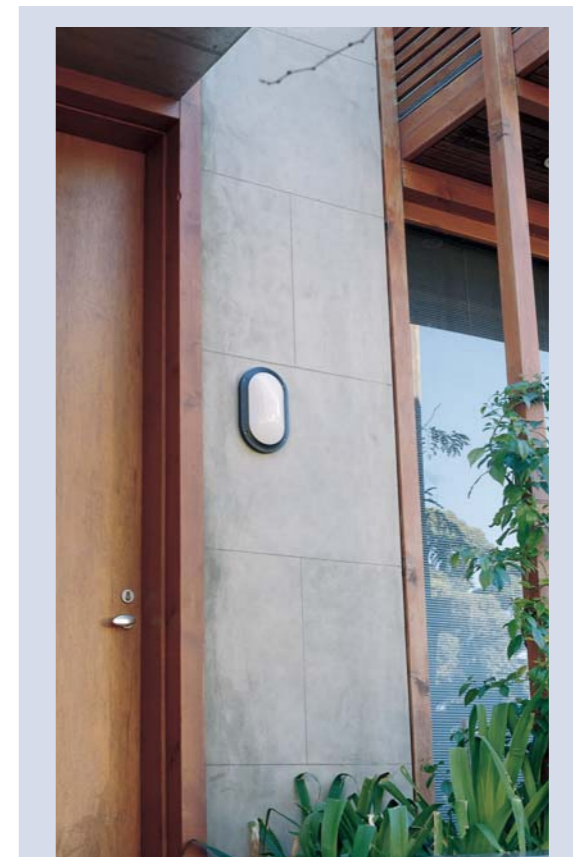
Belle Ovale	Lamp Type	Catalogue No.
1 x 9w G23		OV/■/9
1 x 11w G23		OV/■/11
1 x 18w G24d2		OV/■/18
1 x 26w G24d3		OV/■/26




Belle Ovale Screen	Lamp Type	Catalogue No.
1 x 9w G23		OS/■/9
1 x 11w G23		OS/■/11
1 x 18w G24d2		OS/■/18




Ideal for exterior and high moisture areas.



DATA AVAILABLE ON CD



MADE IN AUSTRALIA



New Sumo 350

Weatherproof, IP65, Vandal resistant, Optional emergency light

The Sumo 350 has been designed for use in areas that require a weatherproof or vandal resistant luminaire. Added to the usual benefits you would expect from such a luminaire is the ability to have the Sumo 350 wired with a self contained combined maintained emergency pack that complies with AS/NZS 2293.1: 1998. Sumo 350 is manufactured from diecast, powdercoated aluminium and polycarbonate diffuser. Sumo can be ceiling or wall mounted in interior or exterior applications.

Features

- Diecast aluminium, powder coated finish, opal polycarbonate lens
- Stainless steel allen head trim screws
- Weatherproof IP65
- Vandal resistant
- Manufactured to comply with AS/NZS 60598 and AS/NZS 4501
- Completely self contained emergency within the standard luminaire.

Specifications

■ How to specify colour	White	W
	Black	B
	Silver	S

(eg. NSM 218/■ becomes NSM218/B)



The Sumo range has been designed to facilitate side entry with surface mounted conduits for through wiring.

Sumo 350	Lamp Type	Catalogue No.
2 x 18w G24d2		NSM218/■ NSG218/■ NSS218/■
2 x 26w G24d3		NSM226/■ NSG226/■ NSS226/■
2 x 18w Combined Emergency G24q2		NSM218CE/■ NSG218CE/■ N/A
		Full Lens Grill Screen

Emergency specification

The Sumo 2 x 18w CE (Combined Emergency) fittings have been tested and comply with AS/NZS 2293.3. The 2 x 18w Combined Emergency has both lamps operating on normal supply and one lamp on emergency mode.

Emergency Classifications

Ceiling Mount

Photometric Test report LSA9103.
Thermal Test report LSA0511901T
C0 – D10
C90 – D10
C180 – E12.5

Wall Mount

Photometric Test report LSA9102.
Thermal Test report LSA0511901T
C0 – D3.2
C90 – D2.5



Fluorolite

Features include

- IP44 rating – suitable for protected external areas
- Suitable for use in bathrooms zone 2 and 3
- Suitable for wall or ceiling mounting
- Vandal resistant polycarbonate construction
- Available in white, black, or silver

Semi recessed suspension bracket FLSRK

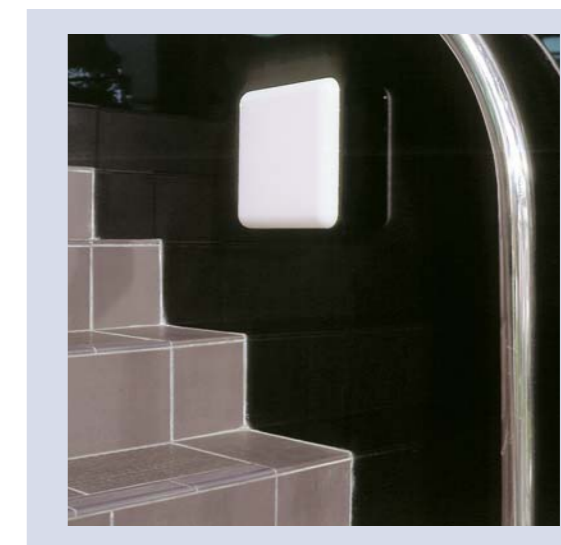
The Fluorolite can be easily semi recessed into plaster or tile ceilings. This reduces the exposed depth of the fitting to only 53mm. To facilitate conversion, please order the semi recessed suspension bracket.

- How to specify Add the suffix **SRK** to the catalogue number.

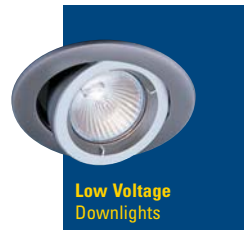
- How to specify base colour
- | | | | |
|-------|---|--------|---|
| White | W | Silver | S |
| Black | B | | |
- (eg. FL/■/29 becomes FLW29 ie. white trim)



Fluorite	Lamp type	Catalogue No.
1 x 9w G23		FL/■/9
2 x 9w G23		FL/■/29
1 x 16w GR8		FL/■/16
1 x 21w GR10q		FL/■/21
1 x 26w G24d3		FL/■/26
1 x 28w GR10q		FL/■/28



Efficient Lighting Systems manufactures a wide range of commercial lighting fixtures. Other brochures are available including the following.



Efficient Lighting Systems Pty. Ltd.
ABN 14 050 028 209

**39 Tinning Street, Brunswick,
Victoria 3056 Australia**

**PO Box 5084 Moreland West,
Victoria 3055 Australia**

**Telephone: 61 3 9222 5522
Facsimile: 61 3 9222 5521**

**Email: info@elslighting.com.au
Web: www.elslighting.com.au**

Distributed by:

REGISTERED TRADEMARK
ELS and the logo are registered trademarks of Efficient Lighting Systems Pty. Ltd.

WARNING The data contained herein is supplied and you access and use the data strictly on condition that:

(i) except as may otherwise be provided by law, Efficient Lighting Systems ("ELS") shall not be under any liability whether in contract, tort or otherwise for any injury, damage or loss, including consequential damage or loss whether to persons or property, which is caused or contributed to by any error or omission in the data.

(ii) the data and the light fitting designs to which the data relates may change from time to time and ELS is not obliged to notify you of any such change and shall not be liable for failing to notify you.

(iii) the data is intended to be used in lighting designs which incorporate products supplied by ELS and must not be used for any other products.

(iv) the data may only be used by the person for whom it was intended and then only for the intended use.

(v) the data and copyright therein remains the property of ELS and the copying or duplication of the data is prohibited. ELS 2004